

葫芦岛海滨展示中心，辽宁，中国

HULUDAO BEACH EXHIBIT CENTRE, LIAONING, CHINA, 2011

建筑设计：META-工作室

ARCHITECTS: META-Project



设计负责人 /Partner in Charge: 王硕, 张婧 /WANG Shuo, ZHANG Jing

设计团队 /Design Team: 周志敏、梅富鹏、阳成、赖钰辰、林昌炎、汤恒 /ZHOU Zhimin, MEI Fupeng, YANG Cheng, LAI Yuchen, LIN Changyan, TANG heng

项目地点 /Location: 辽宁葫芦岛 /Huludao, Liaoning, North-east China

项目功能 /Program: 展示空间, 接待区, 洽谈区, 水吧, 办公区 /Exhibition area, Reception, Meeting rooms, Café/Bar, Office

基地面积 /Site Area: 13 000m²

建筑面积 /Built Area: 2 500m²

设计时间 /Design: 2010

建成时间 /Completion: 2011

摄影 /Photo: 陈溯 /CHEN Su

本项目位于葫芦岛南部一个宁静而幽美的海湾，处于两山环抱之间，曾是当地渔民捕鱼的一个避风港，海滩上还四处散布着渔船和渔网。这一海湾地处辽东湾西侧，距离北京仅3小时车程。由于这里拥有整个

渤海地区所稀有的资源——海滩，因此，作为华北地区和东北地区的交汇点，每年夏天吸引数以千万的人流前来度假。海洋与城市在这一片海滩上交接，形成自然与人结合转换的一个界面。而作为海滩上的第一幢建筑，展示中心试图重新建立起人文活动与自然环境中积极的关系。

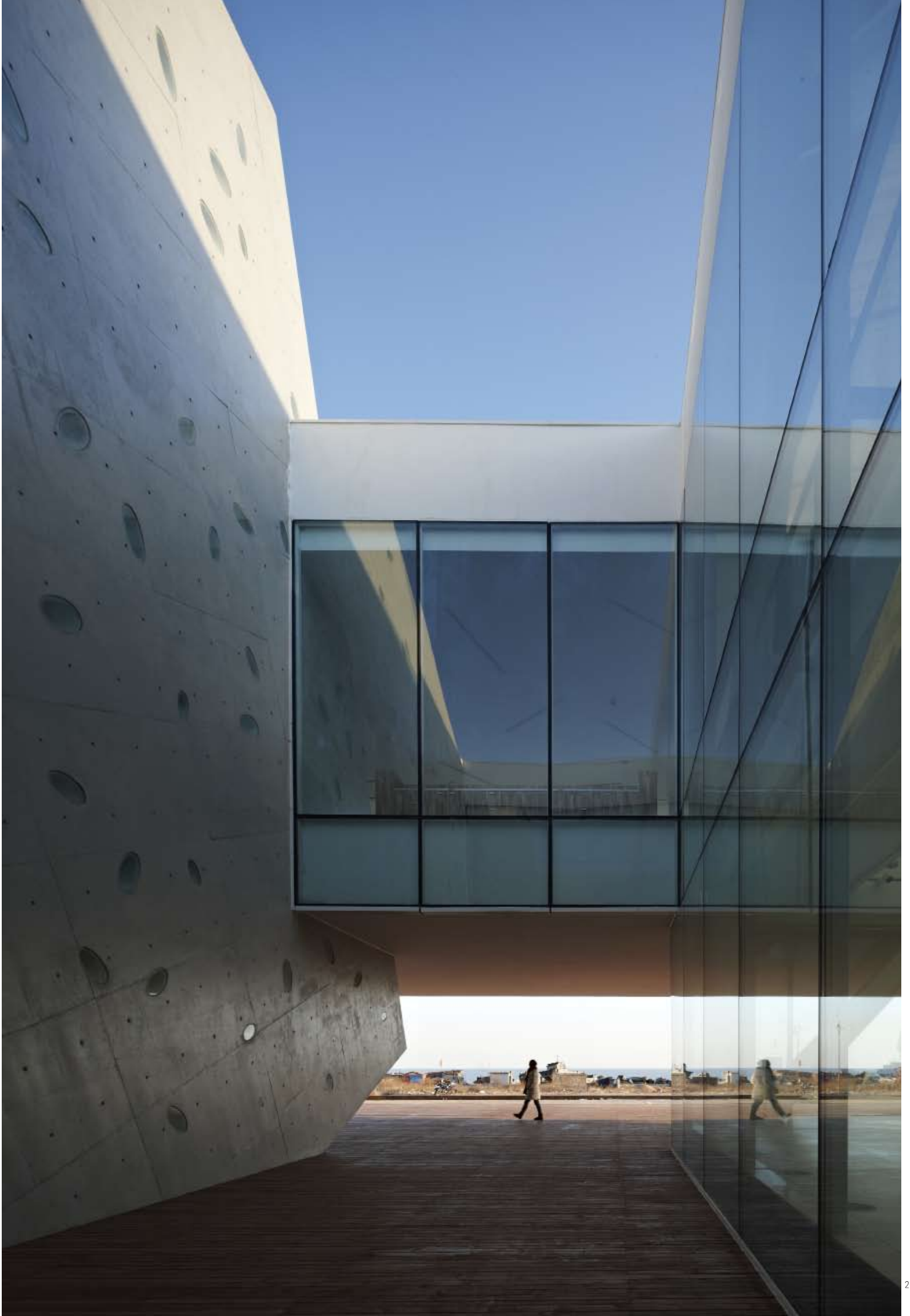
公共舞台：项目试图开拓出一个具有“公共舞台”性质的空间——不仅能够吸引前来参观的特定人群，更能引起整个海滩上的公众关注这里发生的每一个事件。因此，建筑选择了一个紧邻公共开放海滩西侧的位置，距离涨潮线只有100m。这样，建筑为前来海湾的游客提供多种文化活动的舞台，不但成为人们热议的话题，更激活了整个城市的文化生活。

简化的动势：我们的设计与其说是一种高度概括的解决方案，不如说是一个简洁明确的推理过程。对于这个项目来说，最有利的资源是在不同标高层次上感受海湾全景。由此推导出关键的剖面：建筑的主体需要成为一个“悬浮的盒体”，而为了最大化景观优势，参观人流从背海一侧进入建筑，随即上到二层的面海空间，同时，悬浮的盒体下面覆盖的部分则完全向海

滩公共人流开放——控制整个建筑的实际上是这一剖面，以及由这一剖面所带来空间特征。

意外的复杂性：建筑主体为一个35m×35m的悬挑盒体，垂直指向海岸。而倾斜25°的混凝土楼梯盒以一种坚决而略显“生硬”的方式贯穿这一主体，呈现出一种形体上的冲突。楼梯盒既是所有流线的交汇点，也是整个体量的重心。这种空间组合方式从倾斜的混凝土楼梯盒子逐步推广至其他功能空间，如通高的展示空间，贯穿建筑中心的内院，抬升的钢质VIP洽谈室，咬合两个体量的连廊，倾斜的屋顶——通过这些抽象的几何形体及材质间相互“冲撞”的方式，在空间各处构成似乎未经处理的、粗野的张力，并藉此达到一种意料之外的复杂性。

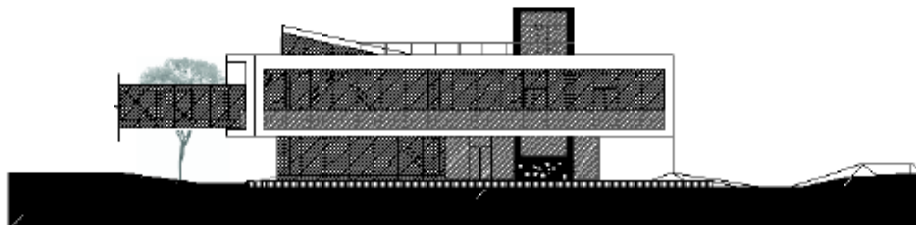
META-工作室希望藉这一实践表明，如何从对“当代”生活的内涵出发进而推理出明确的解决方案，以简化与极致的语汇组合出一个承载着多种活动功能的充满复杂性的空间；在对立的城市与海洋的张力界面上营造出一座独立且积极的建筑，并以此作为透视的原点，在此之上建立新的公共空间的契合——即人与大海平等的观照。□



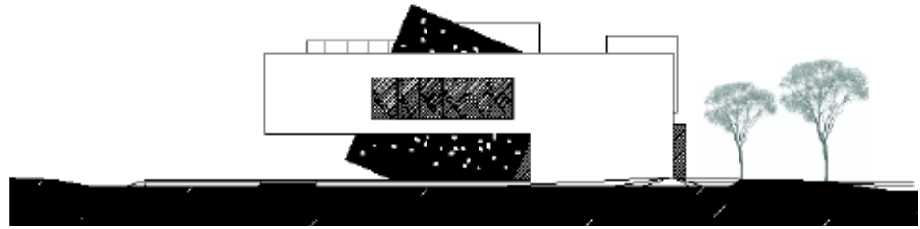
Previously a fishing village protected by the surrounding hills, the Dragon Bay is the essence of Northeast-Chinese coastal idyll. Yet still scattered with fishing boats and nets, now it is facing the city's upcoming development: situated on the west coast of Bohai Sea rim, with only 3 hours of traffic from Beijing, the site offers a natural resource that is so rare across the north of China – "the beach", which attracts tens of millions of people from Beijing and Northeast-China to spend their summer here. As the first building on the beach, the Exhibit Center will re-establish the relationship between the cultural activities and its natural environment.

Public Stage: the Exhibit Center is about creating a common base that not only absorb the reserved visitors', but also attract the public attention and generate more topics. In this currently deserted land, we choose to locate the building next to the public beach activity zone at the east, and just 100 meters from the waveline, so as to set the building as a "Public Stage". Thus, the center containing multiple cultural programs, offers all sorts of activities for the visitors of the bay. While elevating their expectations, it also activates the cultural life of the entire city.

Simplified Dynamics: the design is rather a clear deduction process, than a generalized solution. Experiencing the sea horizon from multiple levels is



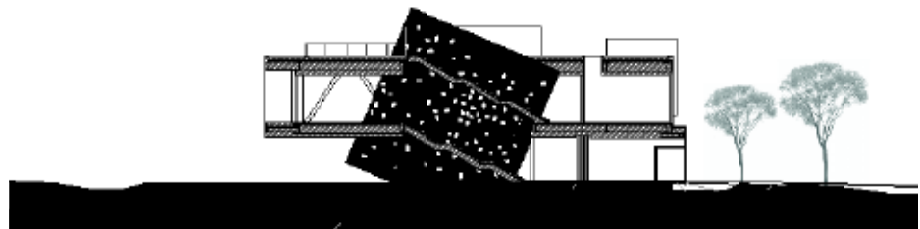
3



4



5



6



7

8

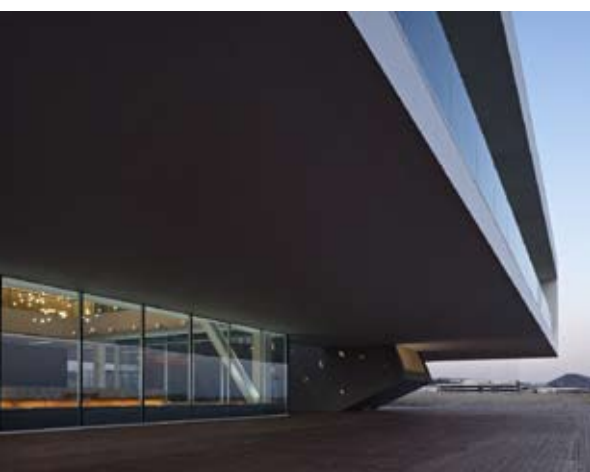
of prime importance for the building – such concept is deducted to a key section: to float the front 2/3 of the building, creating a cantilevered floor for the “stage” to catch more public attention, at the same time offering a covered space for outdoor event; and additionally, a roof-top viewing deck opening to the entire surroundings.

Spatial Complexity: The main volume of the building is a floating box of 35m x 35m, perpendicular to the seashore. The cast-in-place concrete stair-cube bluntly penetrates the floating box with a 25-degree inclination, which links the three levels of circulation, also functions as the structural support for the cantilever. Other program includes the double-height exhibition space, ground-floor reception bar, meeting-room box and sky-bridge – each program forms a clear defined volume that collides with one another in an almost “unresolved” manner. Such “collision” of abstract geometries leads to a vital tension, through which a space of unexpected complexity emerges.

Through this speculation, META-Project tries to demonstrate how to evoke contemporary way of life through clear deduction, and how to catalyze spatial complexity from a simplified dynamics. Based upon such perspective, we have found a new relationship for public space – between human and the sea. □



9



10



11